

# Top 10 Reasons to Move from AutoCAD to AutoCAD Map 3D 2009

## The Power of AutoCAD Map 3D

AutoCAD® Map 3D software is a leading engineering platform for creating and managing spatial data. Bridging the gap between CAD and GIS, AutoCAD Map 3D provides direct access to the leading data formats used in design and GIS—no matter how the data is stored. Map 3D enables the use of AutoCAD® tools for maintaining a broad variety of geospatial information and enables design processes to integrate GIS functions—such as spatial queries, thematic mapping, and buffer and network analysis—in a single environment for more efficient workflows. The results are better designs, increased productivity, and better data quality.

## Now Is the Time

Want to get unparalleled productivity from your infrastructure design process? Then now is the time to take a look at why so many engineers, designers, and drafters are switching to AutoCAD Map 3D. The software provides innovative engineering design and drafting tools that are easy to use for the AutoCAD user.

For more information about AutoCAD Map 3D, go to [www.autodesk.com/map3D](http://www.autodesk.com/map3D).

To locate the reseller nearest you, visit [www.autodesk.com/reseller](http://www.autodesk.com/reseller).

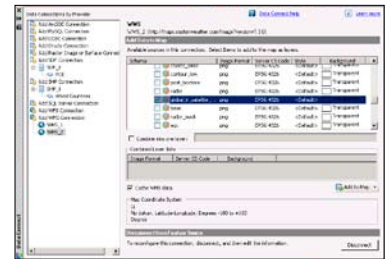
Discover why so many engineers, designers, and drafters are switching to AutoCAD Map 3D.

**1 Give Designs Real-World Context**  
Work with more than 4,000 real-world coordinate systems, and use tools such as Transform, Rubbersheet, and Track Coordinates to accurately georeference your AutoCAD design data. Then combine your CAD design information with geospatial vector data and satellite imagery, or integrate your CAD data with your organization's GIS.



*RESULT: Your design data has real-world context, enabling you to quickly integrate data from a variety of sources in order to create accurate drawings, designs, and maps that can be used by field personnel, other departments, and other geospatial software applications.*

**2 Streamline Data Access**  
Access the leading data formats used in design and GIS—no matter how the data is stored. Access road, cadastral, topographic, and environmental data in the most commonly used GIS formats. Directly access and edit vector data, access raster imagery such as aerial and satellite photography, and connect to web services, including Web Map Services (WMS) and Web Feature Services (WFS), to take advantage of data sources publicly available on the Internet.

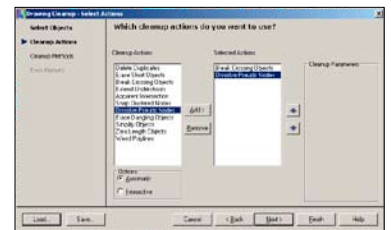


Common data formats include

- ESRI® Arc/Info®, E00, SHP, and ArcSDE®
- GML2 and 3.1.1
- MapInfo MIF/MID and TAB
- Micro Station® DGN (V7 and V8)
- MrSID® and ECW

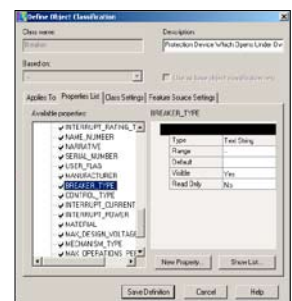
*RESULT: Work in hybrid IT environments with existing CAD and GIS systems and data by enabling CAD users to access and edit GIS information in a familiar CAD environment. Combining engineering and GIS data contributes to better decision making and results in more efficient business processes across departments and job functions.*

**3 Cleaner, More Accurate Designs and Data**  
There's no need to waste time on inaccurate drawings or poorly digitized data. The powerful tools in AutoCAD Map 3D 2009 automate the cleanup of common drafting inaccuracies, reducing duplication and incorrect information. Delete duplicates, including text objects, correct undershoots or dangling objects, and minimize errors with less time and effort.



*RESULT: You can be sure that your design information is free of common errors, helping to maintain data accuracy throughout the design, build, operate, and maintain (DBOM) lifecycle.*

**4 Work with Inconsistent Data Standards**  
Organize objects in your drawing by the real-world features that they represent (roads, parcels, cables, or water pipes). When you create an object using object classification, the object automatically takes its properties and values from its object class, maintaining consistency and establishing standards in your drawing.

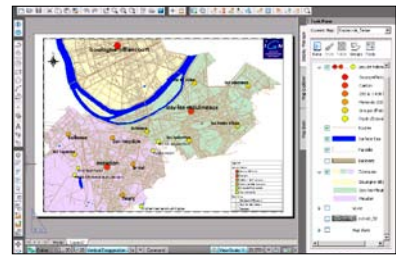


*RESULT: Both new and experienced staff can improve productivity and drafting efficiency while maintaining data quality during the data creation and capture phases of a project.*

## 5 Powerful Mapping and Stylization Tools

When you need to represent data in a clear, effective way, AutoCAD Map 3D is your best solution. Stylize design and GIS information to highlight specific features using object properties and data attributes. Easily analyze and highlight information such as service areas, zoning districts, land usage, pipe and cable installation dates and diameters, and much more using cartographic functionality such as thematic mapping, dynamic labeling, and transparency. You choose the styling approach that best fits your needs.

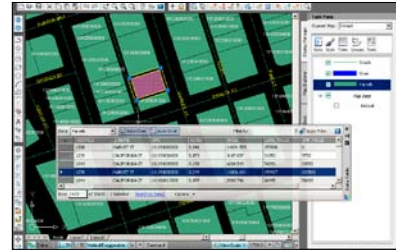
*RESULT: You can produce more professional designs, maps, plans, proposals, and reports, communicating your design intent quickly and effectively and supporting better decision making.*



## 6 Sophisticated Database Features

AutoCAD Map 3D provides open, standards-based database support. Easily join CAD objects to commonly used databases such as Microsoft® Access™ and easily store CAD and GIS data in popular relational database management systems including those managed by ESRI ArcSDE. Use existing data models or create your own schemas using straightforward tools, and use databases such as Oracle®, Microsoft SQL Server™ or MySQL® to store spatial data without expensive middleware.

*RESULT: Take advantage of information that resides in databases to easily combine graphical design and GIS data with tabular information in one view. Efficiently support planning and infrastructure asset management activities by searching, filtering, analyzing, and editing spatial and nonspatial information.*



## 7 High-Impact 3D Rendering

Through the newest generation of 3D technology, AutoCAD Map 3D 2009 enables you to visualize and analyze large-scale topographic information—digital elevation models (DEM) and ESRI GRID files—for elevation, slope, and aspect, as well as create contours and perform sunlight studies with hill shading. Then use draping functionality to combine topography data with aerial photographs and vector data for stunning 3D renderings.

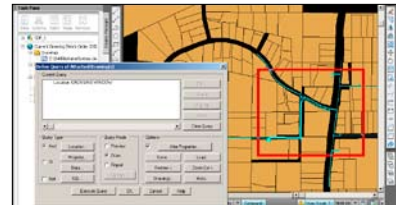
*RESULT: Your presentations and plans come to life with amazing accuracy, creating visuals that have a lasting effect on project decision makers and your reputation.*



## 8 Simultaneous Multiuser Access

The days of single-user drawing and data access are over. Using DWG™ query functionality, multiple users can access, search, and edit the same sets of DWG files or base maps simultaneously. This efficient and reliable way of working collaboratively with DWG-based information reduces the need for version control and minimizes time spent waiting for data.

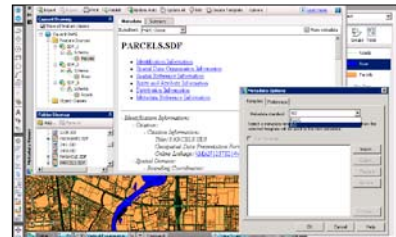
*RESULT: Productivity can be increased by enabling multiple users to work simultaneously while sharing design data. Find the right project information for the task.*



## 9 Maintain Investments in Spatial Data with Metadata

Design and GIS data is one of your organization's most valuable assets. AutoCAD Map 3D enables you to maintain your investment in spatial data with tools for creating and editing metadata (the who, what, when, where, why, and how) about your spatial information. You can then publish it in standard formats, including ISO 19115 and 19139 and Federal Geographic Data Committee (FGDC).

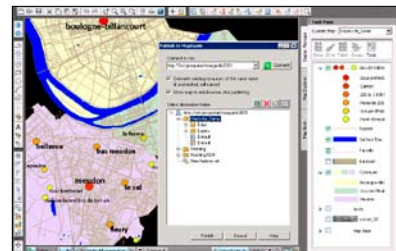
*RESULT: Organize and maintain your organization's internal investment in spatial data. Metadata enables you to search information to support multidepartment and interdisciplinary usage and share data with others in your organization or externally with contractors and regulatory agencies.*



## 10 Easy Distribution of Maps and Design Data

AutoCAD Map 3D lets you easily distribute geospatial and design data in a variety of ways. For instance, create and design maps in AutoCAD Map 3D and quickly publish them to the Internet using Autodesk MapGuide® Enterprise software, or distribute as individual georeferenced DWF™ files, multisheet DWF map books, and paper plots. Using free\* Autodesk® Design Review software, team members can digitally review, measure, mark up, and comment on 2D and 3D designs, plans, and maps while protecting your intellectual property.

*RESULT: Improve communication among internal teams and mobile field force, and provide contractors, clients, and customers the information they require while saving printing costs and valuable time.*



\*Free products are subject to the terms and conditions of the end-user license agreement that accompanies download of the software.

Autodesk, AutoCAD, Autodesk MapGuide, DWF, and DWG are registered trademarks or trademarks of Autodesk, Inc., in the USA and other countries. All other brand names, product names, or trademarks belong to their respective holders. Autodesk reserves the right to alter product offerings and specifications at any time without notice, and is not responsible for typographical or graphical errors that may appear in this document. © 2008 Autodesk, Inc. All rights reserved.